

# Early Childhood Development and Education in Namibia

Results of the 2012 Survey of Early Childhood Development Centres  
by the Ministry of Gender Equality & Child Welfare

## **Contents**

Introduction	2
Enrolments	2
Orphans and disabled children	5
Facilities and infrastructure	6
Human resources	8
Assessment of learning environment	9
Assessment of facilities	11
Appendix A: Tables of results	13
Appendix B: Survey questionnaire	24

Prepared by

**RAISON (Research & Information Services of Namibia)**

October 2014

## Introduction

In 2012 a nation-wide survey of Early Childhood Development (ECD) Centres was conducted by the Ministry of Gender Equality & Child Welfare (MGE CW). This report presents a selection of key results and sets of information collected during the survey.

The survey was conducted in the months of July and August in 2012 by teams of enumerators employed by and supervised by the MGE CW. A total of 2,070 centres were visited. Information on facilities, staffing and the children at the centres were collected using a questionnaire. Appendix A provides tables of results from the survey while the survey questionnaire is in Appendix B.

Many of the results, especially those concerned with enrolment rates or ratios, were obtained by comparing the number of children at the ECD centres to all children of the same ages that were counted during the 2011 Population & Housing Census. The survey of ECD centres was done in 2012 before the delimitation of new regions and constituencies in 2013. Kavango therefore includes ECD centres and children in the new regions of both Kavango East and Kavango West, while analyses of enrolments per constituency uses the political units as they were in 2012.

Regions with the greatest number of ECD centres were Omusati (382), Oshikoto (252), Oshana (246) and Ohangwena (235). Regions with the fewest centres were Omaheke (42), Hardap (46), Kunene (59) and Zambezi (62) (Figure 1).

Of the 2,070 centres, 83.7% were registered with the MGE CW. The other 14.9% were not registered or no information was collected at 29 or 1.4% of the centres. Regions with the highest proportions of registered centres were Kunene, Oshana, Omusati and Oshikoto. The lowest proportions were in Khomas, Hardap and !Karas.

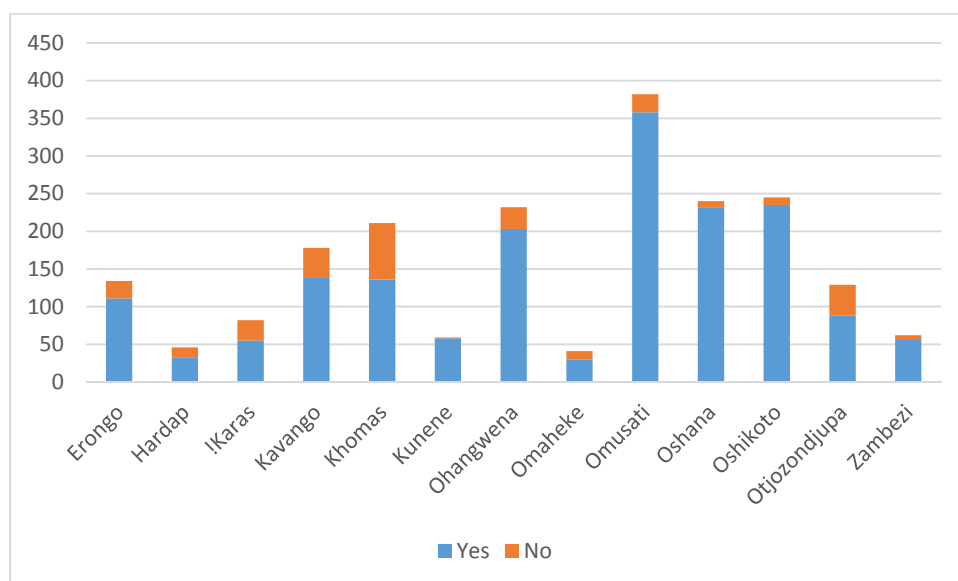


Figure 1. Numbers of ECDs per region that were registered or not with the MGE CW.

## Enrolments

A total of 61,218 children were enrolled in the ECD centres in 2012, of which 31,911 (52.1%) were girls and 29,307 (47.9%) were boys. Of all girls aged 0-9 years in the country, 12.1% were at ECD centres while 11.2% of all boys were enrolled at the centres. Taking boys and girls together, 11.7% of all children younger than 10 years were at the ECD centres.

In the country as a whole, the highest enrolment percentages were among 4-5 (24.6%) and 6-7 year-olds (18.7%) where the enrolment rates were several times higher than the other age groups

(Figure 2). Enrolment rates for girls were slightly higher than for boys in all the age groups. Similar differences in enrolment rates between ages were found in all the regions (Figure 3).

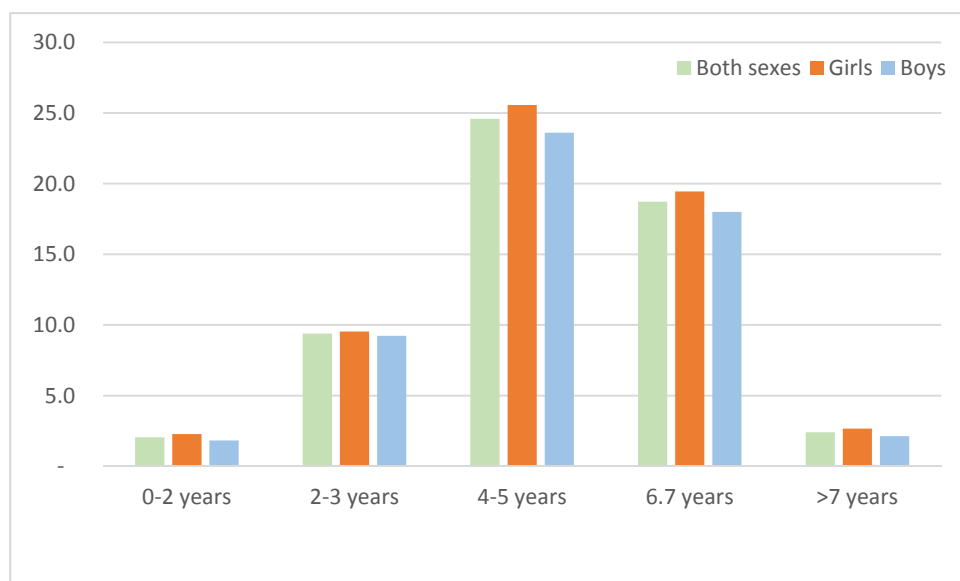


Figure 2. Rates of enrolment in ECD centres for children of different ages and genders.

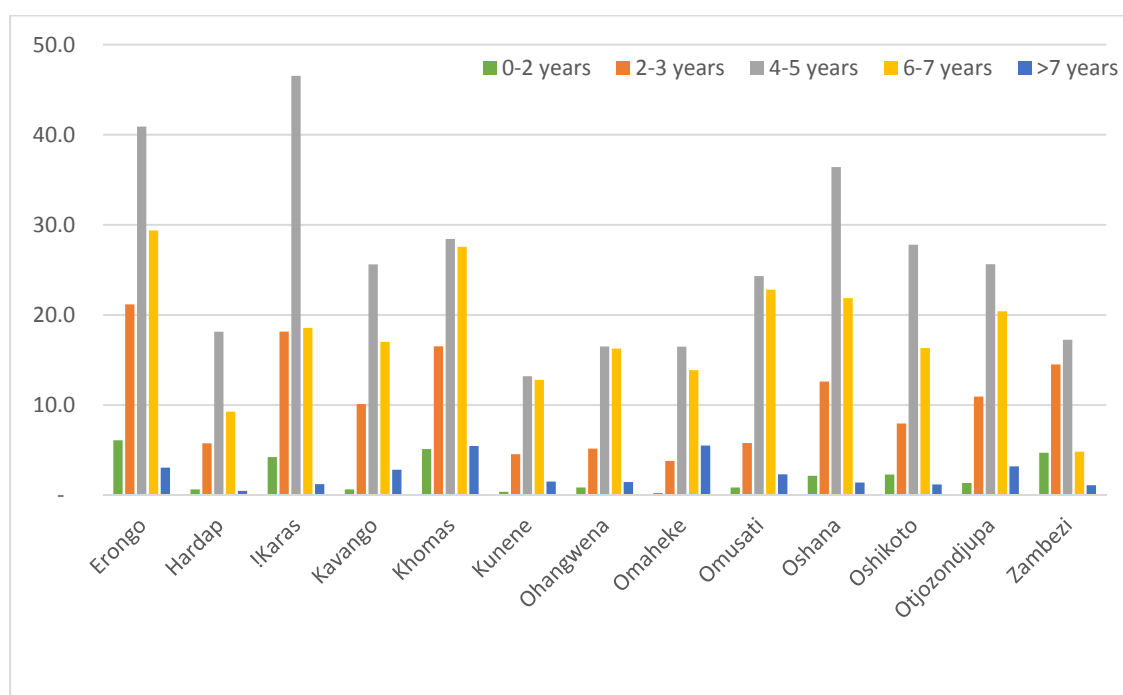


Figure 3. Rates of enrolment in ECD centres for children of different ages in each region.

Rates of enrolment among boys and girls in each age group in all constituencies are given in Table 4 in Appendix A. As one measure of ECD attendance, Figure 4 depicts percentage enrolments for 4-5 year-olds. Considerable variation between constituencies is evident, ranging from over 50% in nine constituencies to less than 10% in 13 constituencies.

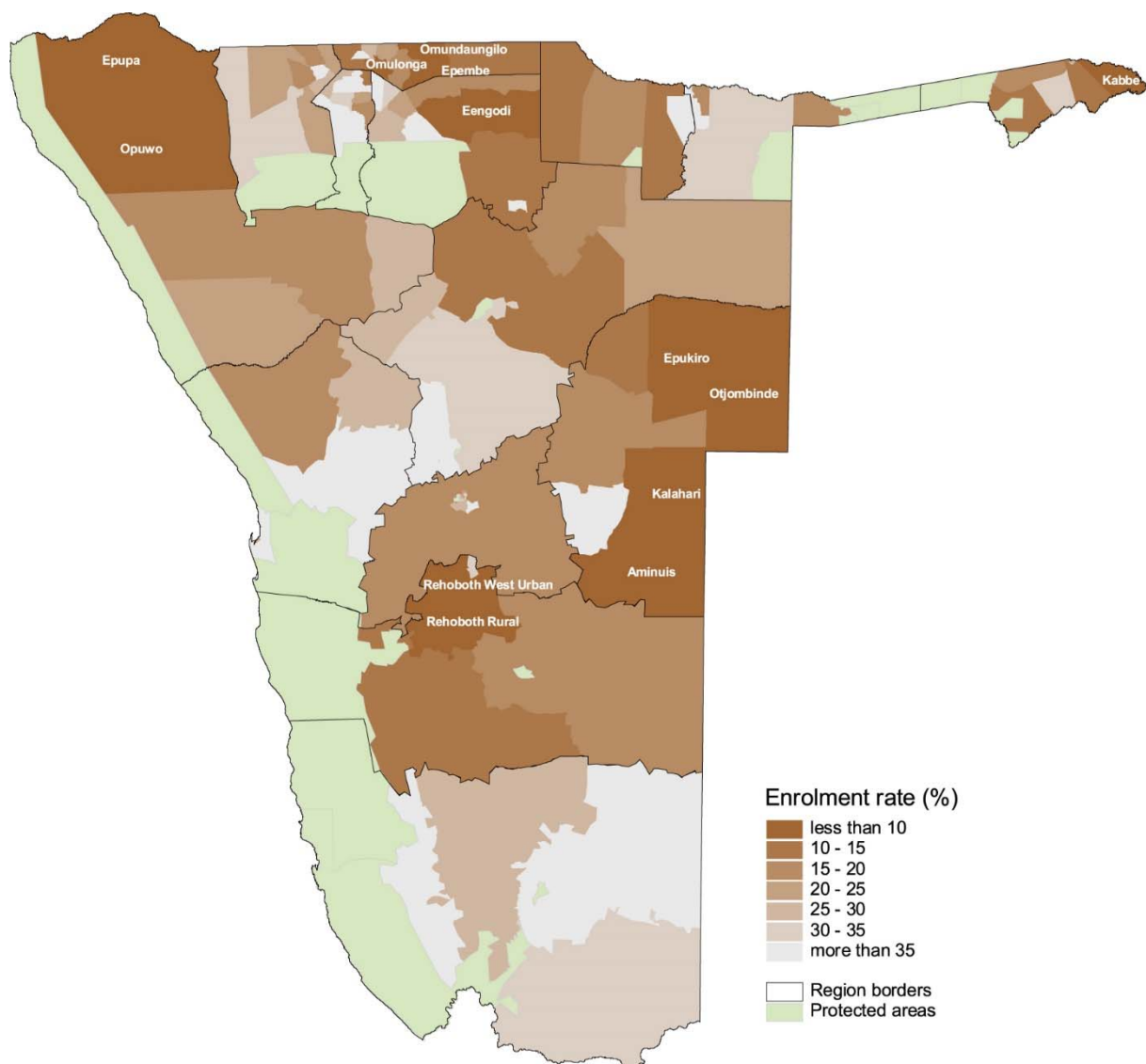


Figure 4. Enrolment rates of 4-5 year-olds per constituency. Those with enrolment rates of less than 10% are labelled on the map.

It is of interest to compare the total enrolment of 61,218 children recorded at ECDs by this survey with measures of early childhood education collected during the 2011 population census and in formal schools by the Ministry of Education in 2012.

2011 census, enrolments in educare for 0-4 years	22,507
2011 census, enrolments in pre-primary for 0-4 years	15,282
2011 census, enrolments in pre-primary for 5 years and above	38,102
2012 pre-primary enrolments at MEC schools, 5 years and above	17,572
2012 enrolments at surveyed ECD centres, age 0 and above	61,218

### Orphans and disabled children

A total of 42,916 children younger than 10 were recorded as orphans in the 2011 population census, while 2,670 orphans were reported at ECD centres in 2012. These 2,670 children comprise 6.2% of all orphans, which is about half the enrolment ratio (12.1%) of all non-orphans, suggesting that relatively fewer orphans go to ECD centres.

The proportion of orphans at ECD centres was very similar in all regions, except Kavango where enrolment rates were about double those elsewhere (Figure 5). The highest numbers of orphans were in ECD centres in Kavango, Omusati and Ohangwena (Table 5).

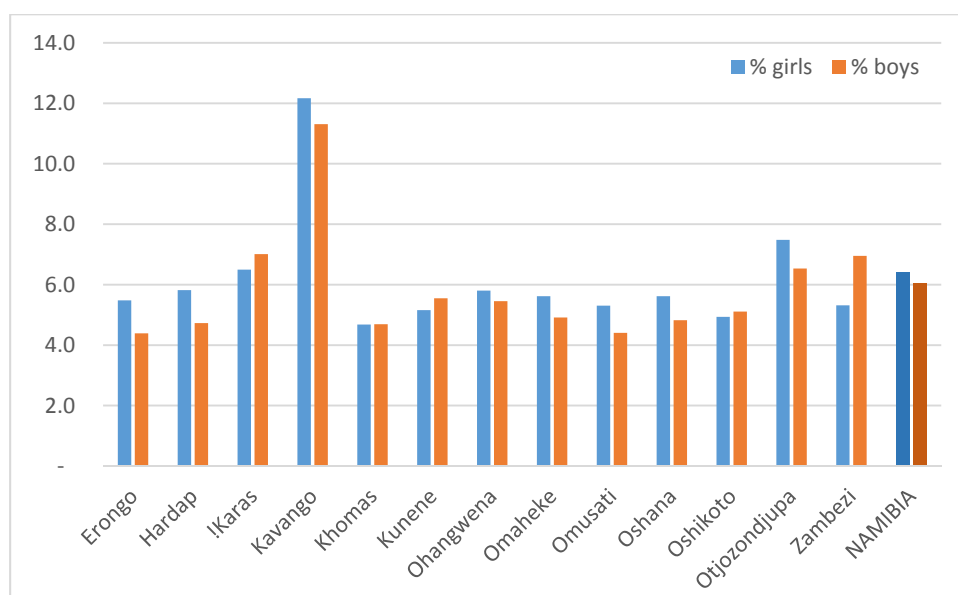


Figure 5. Percentages of orphans aged less than 10 attending ECD centres.

A total of 2,124 children at ECD centres were recorded as being disabled in 2012. That total is 16.9% of all children aged less than 10 who were recorded as being disabled during the 2011 census. The percentage is significantly higher than the 11.5% enrolment ratio for children who were not regarded as disabled.

This difference suggests either that higher proportions of disabled than other children attend ECD centres, or the criteria for recording disabilities differed between the ECD survey and population census. For example, learning disabilities were probably reported more frequently by caregivers in ECD centres than by parents or guardians at home.

More than half (1,368 or 64%) of disabled children at ECD centres suffered from learning difficulties (Table 6). This was followed by hearing impairments (324 or 15.3%), physical handicaps (271 or 12.8%) and visual problems (161 children or 7.6%). There were many more disabled children in ECD centres in Omusati and Kavango than the other regions (Figure 6).

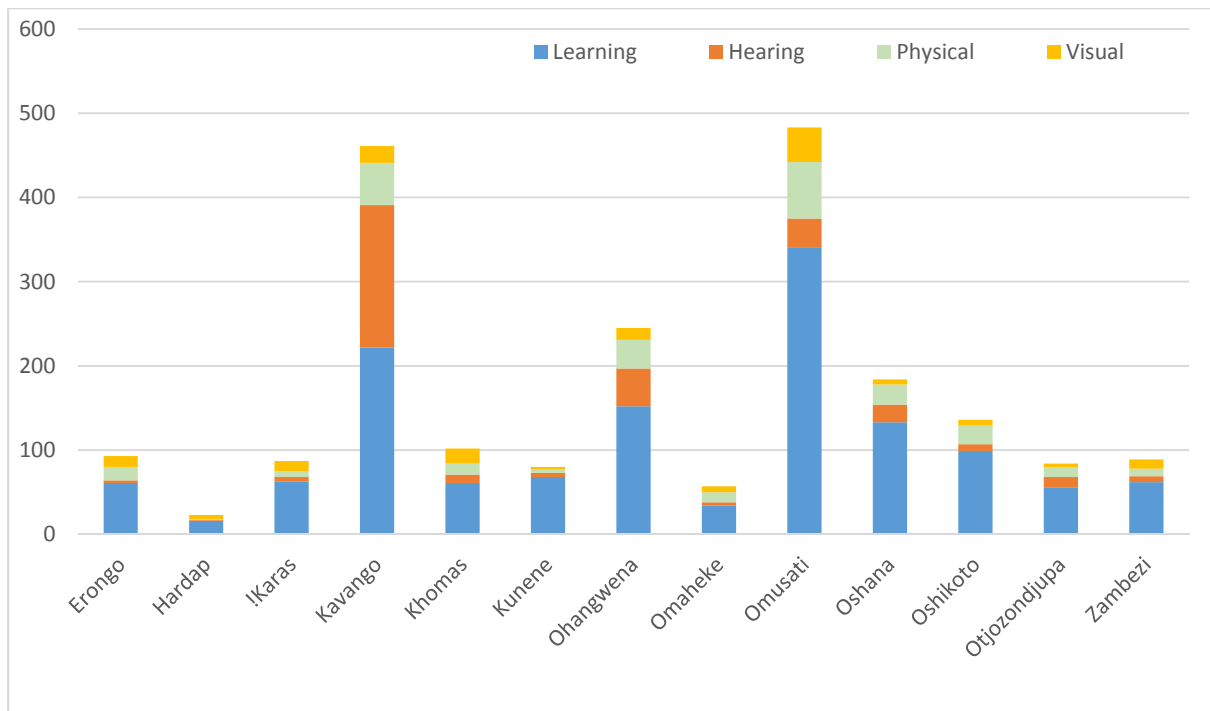


Figure 6. Numbers of children with different disabilities in ECD centres in 2012.

### Facilities and infrastructure

Toilet facilities were deemed to be adequate if there were 25 or fewer children per toilet (Figure 7). In the country as a whole, there was adequate provision of toilets at one-third (34.3%) of ECD centres leaving two-thirds with an inadequate number of toilets.

The poorest provision of toilets was in Ohangwena, Omusati, Kavango and Zambezi. By contrast, over 60% of centres in Hardap, !Karas, Erongo had sufficient toilets.

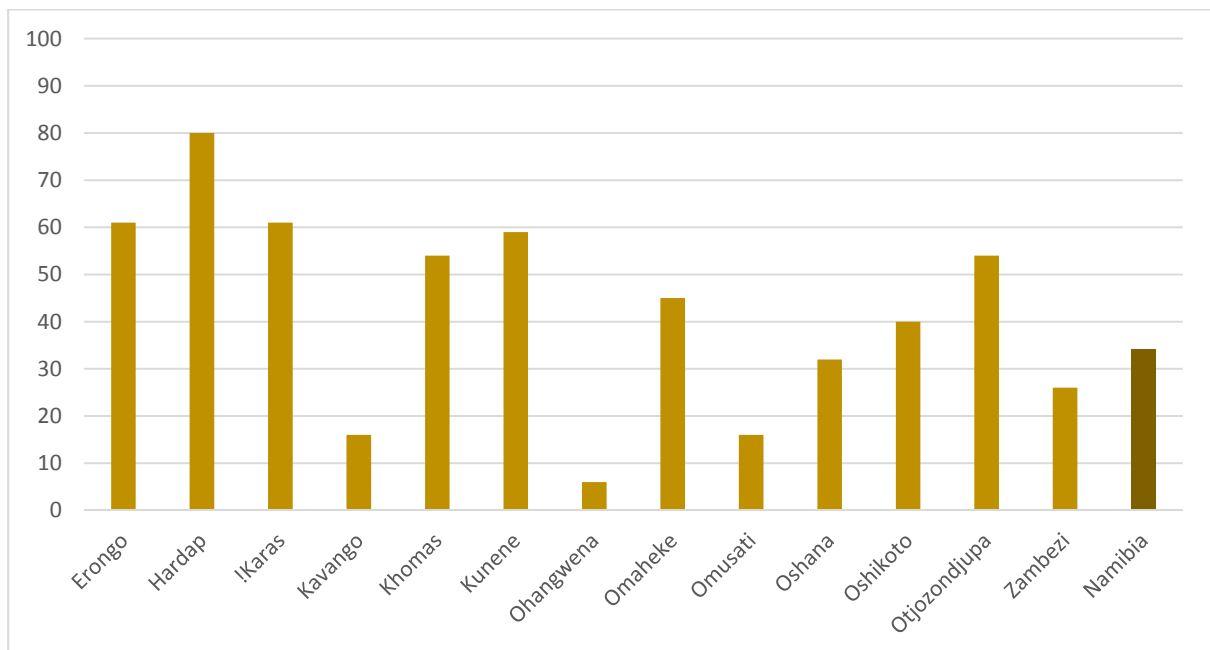


Figure 7. Percentage of ECD centres with adequate provision of toilets as determined by the ratio of children to toilets. 'Adequate' is defined as having one toilet or more per 25 children.

In total, 1,346 (or 65.9%) of all ECD centres were reported as having clean water, but the provision of clean water differed from region to region (Figure 8). Many of the 698 centres that lacked clean water were in Omusati, Ohangwena Oshana and Oshikoto where the proportion of centres with clean water was lowest.

Of the 1,346 centres reporting clean water, the great majority (84.5%) obtained water from taps. Another 5.1% of centres were supplied with borehole water. Other sources were river water, wells, dams, containers and water tanks, but these sources together supplied only 23 centres. The source of water was not reported by 114 centres.

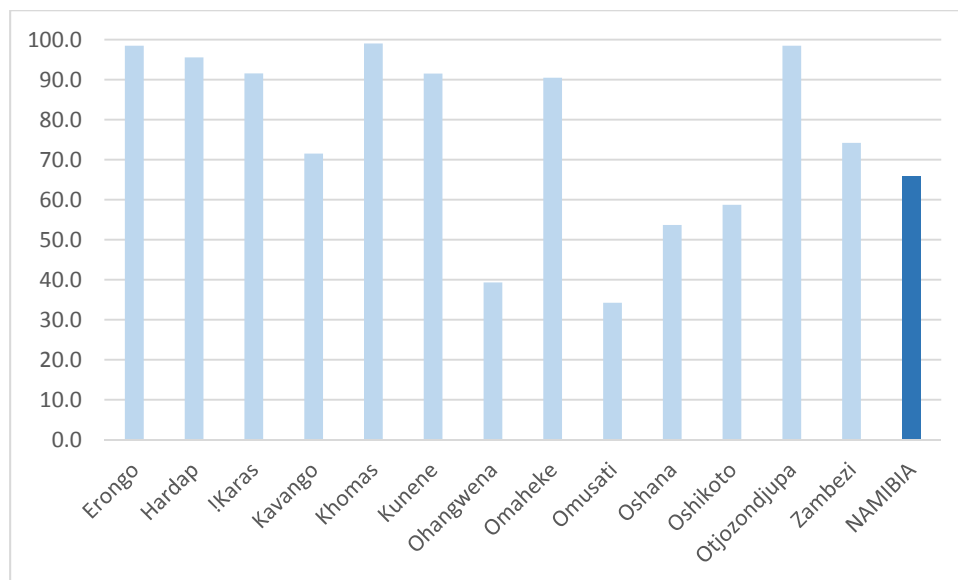


Figure 8. Percentages of ECD centres having supplies of clean water per region and for Namibia as a whole.

Of all the ECD centres, 61.8% reported that they had adequate space (Figure 9). The largest numbers of centres with inadequate space were in Omusati (132 centres), followed by Ohangwena (32), Kavango (28) and Khomas (27 centres) (Table 10).

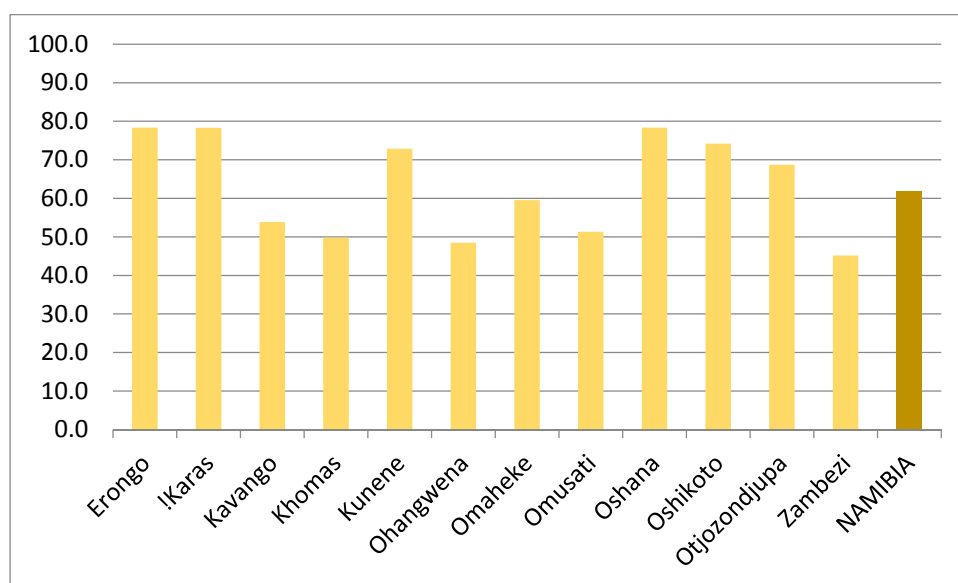


Figure 9. Percentages of ECD centres reported to have adequate space.

The great majority (1,481 centres or 71.5%) of ECD centres were reported to be community owned, followed by private ownership (416 centres or 20.1%), faith-based organisations (134 centres or 6.5%) (Table 11). Fourteen centres were owned by non-governmental organisations (NGOs) and four others were government owned.

High proportions of centres were community owned in most regions, but Erongo, Khomas, !Karas, Oshana and Otjozondjupa had high percentages of privately owned centres (Figure 10).

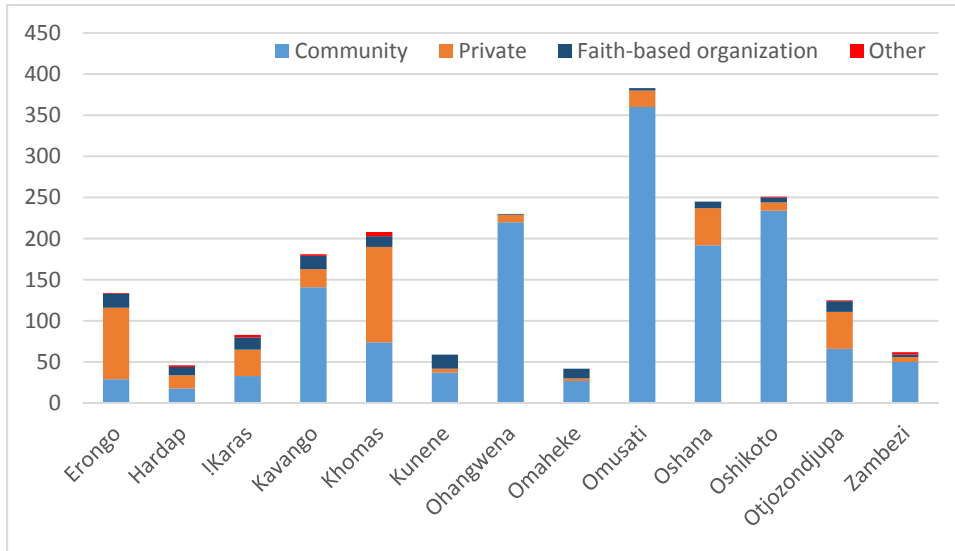


Figure 10. Numbers of ECD centres owned by different organisations. “Other” comprises of NGOs and government centres.

### Human resources

A total of 726 centres did not have any trained caregivers. That is over one-third (35.5%) of all ECD centres. Regions in which high proportions (Figure 11) of centres lacked trained caregivers were Kunene (54.2%), Zambezi (48.4%) and !Karas (47.0%).

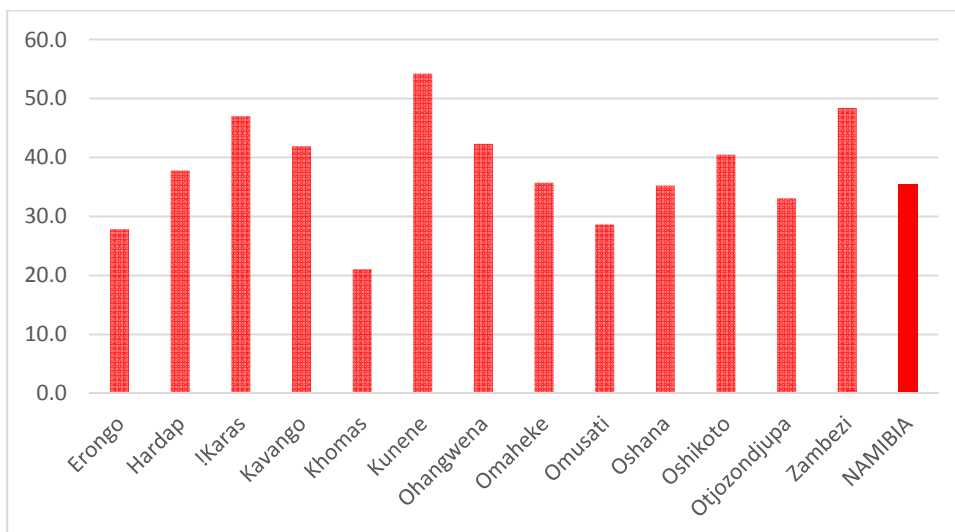


Figure 11. Percentages of centres that did not have trained caregivers.



The highest numbers of ECD centres in which none of the caregivers were trained were in Omusati (108 centres), Oshikoto (102), Ohangwena (99), Oshana (86) and Kavango (75) (Table 12).

Of 2,083 caregivers for whom adequate information was available, 1,493 or 71.7% were eligible for further training at NAMCOL. The remaining 590 caregivers had insufficient training to enrol at NAMCOL because they had not completed Grade 12 or a higher qualification, or had not completed the 3 month MGECW course.

There was relatively little regional variation in the proportions of caregivers eligible for NAMCOL (Figure 12). The greatest numbers of caregivers that lacked adequate training to enrol at NAMCOM were in Omusati (85 caregivers), Oshikoto (84), Oshana (80), Ohangwena (73) and Kavango (67 caregivers) (Table 13).

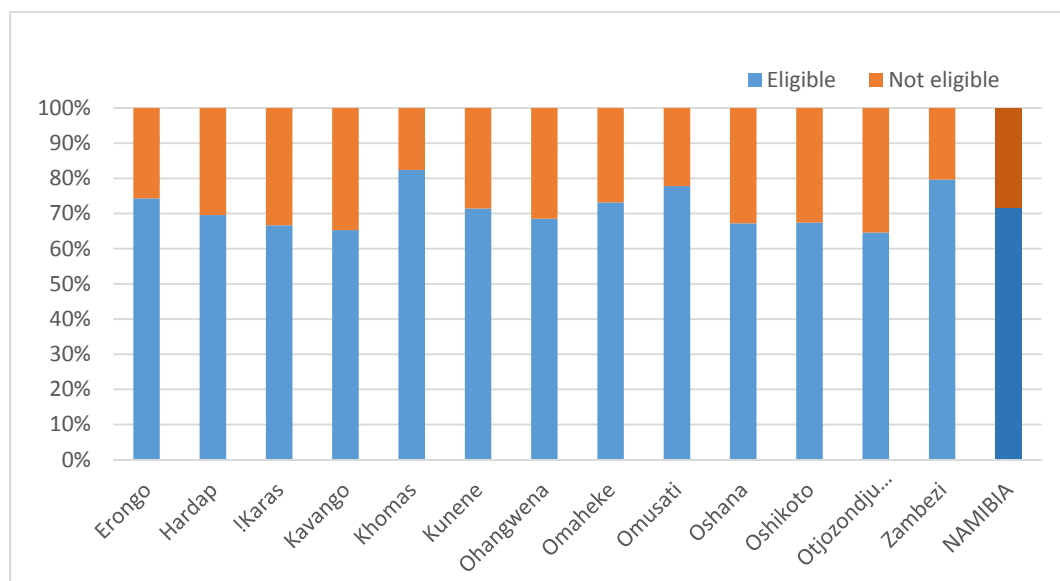


Figure 12. Percentages of caregivers who were eligible or not eligible for NAMCOL training.

### Assessment of learning environment

Enumerators evaluated 12 aspects of the learning environment at each ECD centre (see Question 16 of Appendix B). These included questions on the availability of learning materials, and on levels of engagement, discipline and communication, for example. Each of the 12 aspects was rated and given a numerical score, thus: 1 = poor, 2 = good, 3 = very good. An average score was then derived for each centre by dividing the total score by the number of aspects of the learning environment on which the centre had been scored (1, 2 or 3). All ECD centres were then ranked from highest to lowest value and divided into three groups or terciles. Only 1998 centres could be included in this analysis as the remainder had no answers to any of the 12 questions. Thus, the first tercile has the weakest 666 ECD centres, the second tercile those 666 centres that achieved more average composite scores, while the third tercile consists of the 666 centres that had the highest scores.

Zambezi, Omusati and Oshikoto each had the highest proportions of their ECD centres scoring in the lowest tercile (Figure 13). By contrast, Hardap, Omaheke and !Karas had the highest proportions of their ECD centres falling in the highest tercile.

Focussing on the 666 centres that fell in lowest third, most were in Omusati (192 centres), Oshikoto (120), Oshana (63), Kavango (59) and Ohangwena (58 centres) (Table 13).

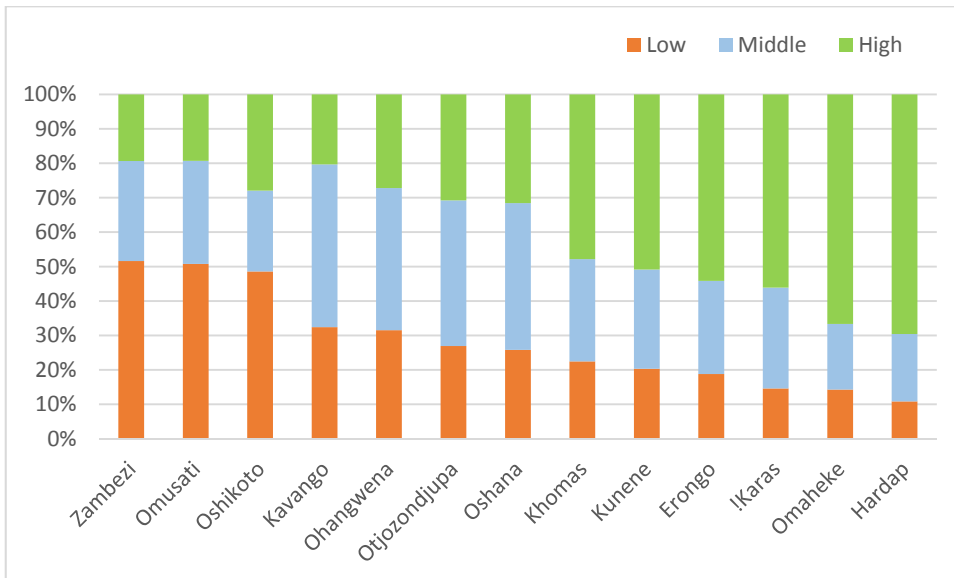
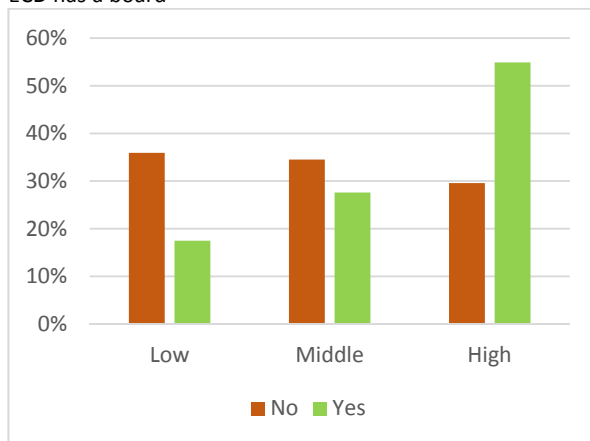
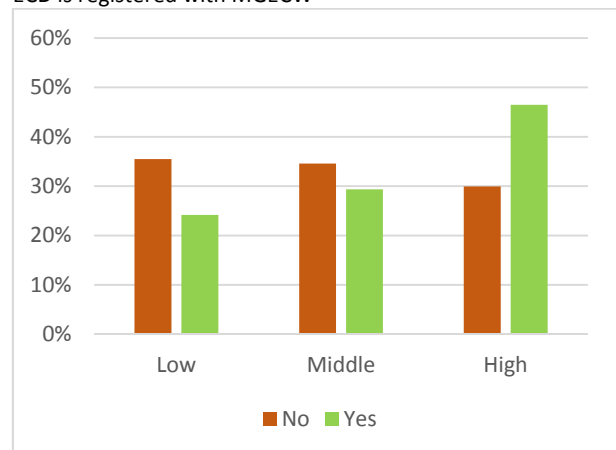


Figure 13. Percentages of ECD centres in each region that fell in the poor, middle or highest tercile groups on the basis of the quality of their learning environments.

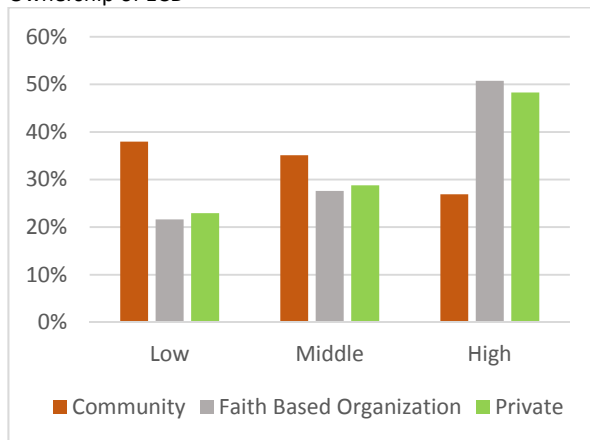
ECD has a board



ECD is registered with MGECW



Ownership of ECD



ECD has at least one qualified caregiver

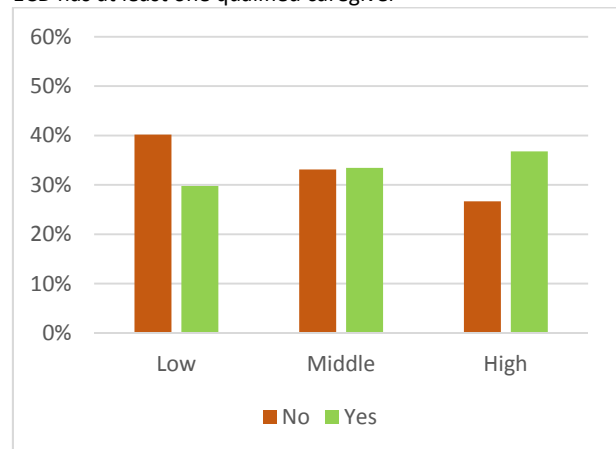


Figure 14. Percentages of ECD centres that scored in the low, middle or high tercile groups for the quality of their learning environment among centres that had management boards, were registered with the MGECW, were owned by different organisations or had at least one qualified caregiver.

Scores for the learning environments of the centres are compared to several of their features in [Figure 14](#) and [Table 15](#). The results indicate that many more ECD centres with high scoring learning environment had management boards, were registered with the MGECW and were owned by private or faith-based organisations. Learning environments of community-owned centres generally had low or average scores. There was little difference in scores between centres that had at least one qualified caregiver as opposed to those that had none.

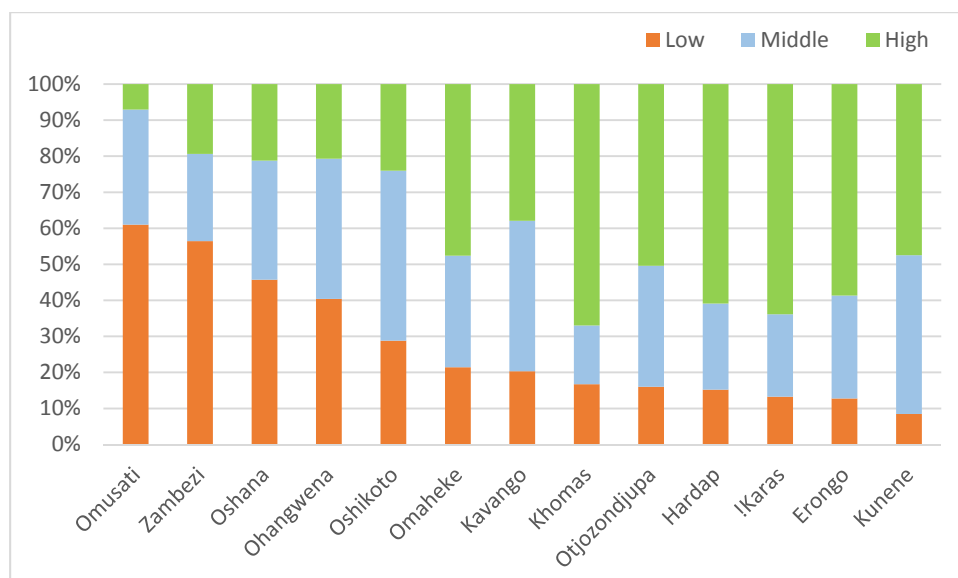
### Assessment of facilities

Thirteen aspects of each centre’s physical facilities were evaluated to assess such conditions as safety, sanitation and equipment (see Question 17 of Appendix B). Enumerators were required to note yes (score = 1) or no (score =0) if a requirement was met or not, respectively.

An average score was derived for each centre by dividing the total score by the number of questions which had an answer (0 or 1) for that ECD. All centres were then ranked from highest to lowest value and divided into tercile groups: the first tercile with the weakest centres, the second tercile those having more average scores, and the third tercile those centres with the highest composite scores. A total of 2,027 centres were included since none of the 13 questions had been answered for the remaining centres.

Omusati, Zambezi and Oshana each had the highest proportions of their ECD centres scoring in the lowest tercile ([Figure 15](#)). By contrast, Khomas, !Karas and Hardap had the highest proportions of their centres falling in the highest tercile.

Focussing on the ECD centres that fell in lowest third, most of them were in Omusati (228 centres), Kavango (85), Oshana (83) and Ohangwena (81) ([Table 14](#)).



**Figure 15.** Percentages of ECD centres in each region that fell in the poor, middle or highest tercile groups on the basis of the quality of their physical facilities.

Comparisons of scores reflecting the quality of facilities indicate that many more ECDs with high scores had boards, were registered with the MGECW and were owned by private or faith-based organisations (Figure 16 and Table 17). Community-owned ECDs usually had low or average scores. The scores of centres that had one or more qualified staff were similar to those that did not have qualified caregivers.

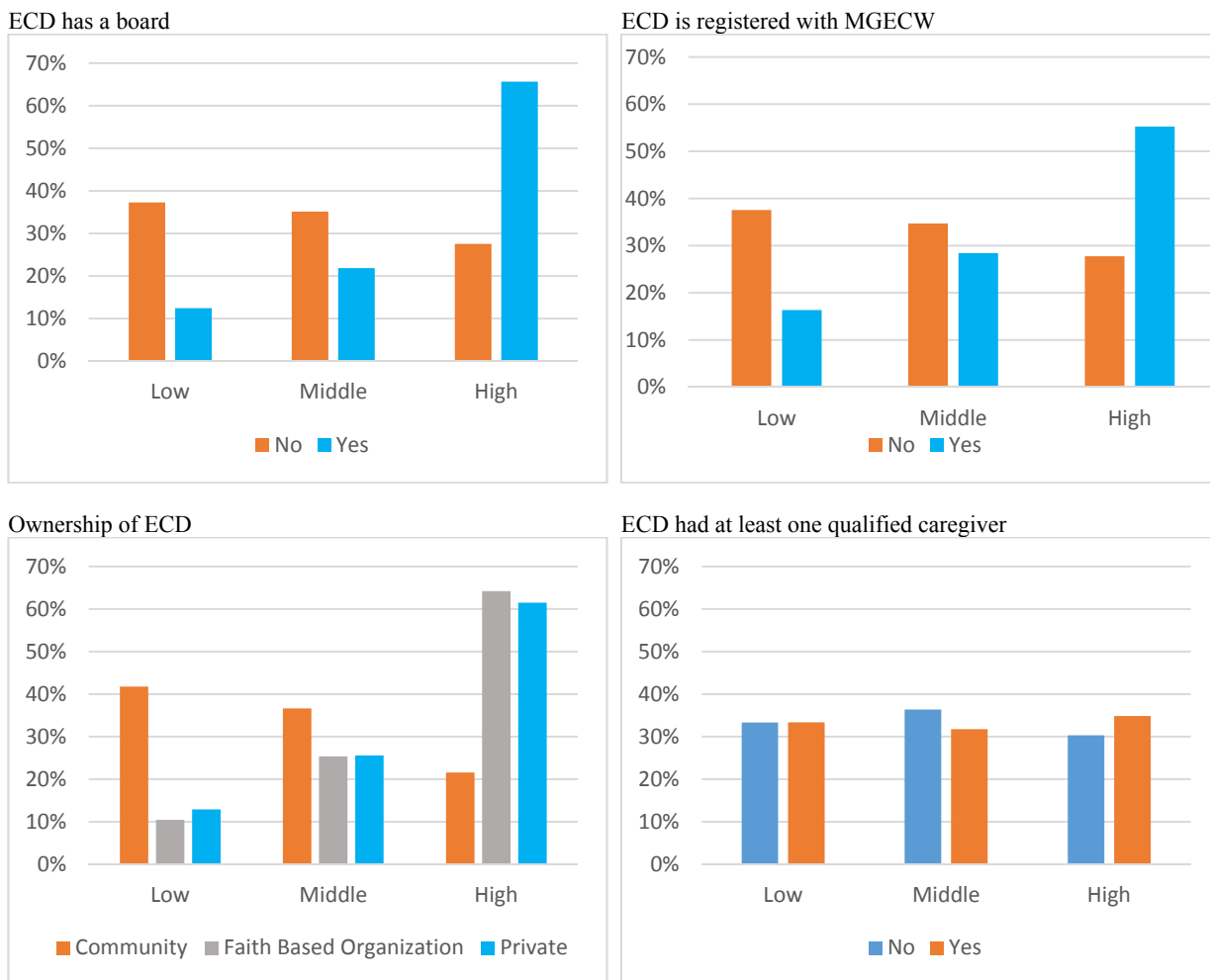


Figure 16. Percentages of ECD centres that scored in the low, middle or high tertile groups for physical facilities among centres that have management boards, or that are registered with the MGECW, or that are owned by different organisations or have at least one qualified caregiver.

## Appendix A. Tables of results from the 2012 survey of Early Childhood Development Centres.

Table 1: Total rates (%) of enrolment for all children per region and age group, and for all girls and boys in the country.

	0-2 years	2-3 years	4-5 years	6-7 years	>7 years
Erongo	6.1	21.2	40.9	29.4	3.1
Hardap	0.6	5.7	18.1	9.3	0.5
!Karas	4.2	18.1	46.6	18.6	1.2
Kavango	0.6	10.1	25.6	17.0	2.8
Khomas	5.1	16.5	28.4	27.6	5.4
Kunene	0.4	4.5	13.2	12.8	1.5
Ohangwena	0.8	5.2	16.5	16.3	1.4
Omaheke	0.2	3.8	16.5	13.9	5.5
Omusati	0.8	5.8	24.3	22.8	2.3
Oshana	2.1	12.6	36.4	21.9	1.4
Oshikoto	2.3	7.9	27.8	16.3	1.2
Otjozondjupa	1.3	10.9	25.6	20.4	3.2
Zambezi	4.7	14.5	17.2	4.8	1.1
<i>All girls</i>	2.3	9.5	25.6	19.5	2.7
<i>All boys</i>	1.8	9.2	23.6	18.0	2.1
<b>All children</b>	<b>2.1</b>	<b>9.4</b>	<b>24.6</b>	<b>18.7</b>	<b>2.4</b>

Table 2: Numbers and percentages of **girls** enrolled in ECD by age groups in each region

Region	0-2 years		2-3 years		4-5 years		6-7 years		> 7 years		Total
	number	%	number	%	number	%	number	%	number	%	
Erongo	234	6.4	641	21.6	1,186	41.2	746	29.9	85	3.4	2,892
Hardap	17	0.9	126	6.7	345	18.8	168	10.1	6	0.4	662
!Karas	86	4.6	310	18.1	807	48.4	288	21.3	20	1.4	1,511
Kavango	64	0.9	651	9.3	1,773	25.9	1,101	18.6	159	2.8	3,748
Khomas	483	5.4	1,091	17	1,878	30.3	1,570	28.3	362	6.4	5,384
Kunene	14	0.5	133	4.7	440	15.7	279	11.8	33	1.5	899
Ohangwena	88	1.1	439	5.9	1,360	18.3	1,059	16.5	90	1.3	3,036
Omaheke	4	0.2	84	4	314	14.6	244	14.7	95	5.8	741
Omusati	67	1	386	5.6	1,741	25.4	1,463	24.6	140	2.2	3,797
Oshana	115	2.5	535	12.4	1,515	36.6	812	22.1	75	2	3,052
Oshikoto	127	2.4	415	8.1	1,474	29.1	753	16.8	63	1.4	2,832
Otjozondjupa	64	1.6	458	11.6	1,006	25.8	656	20.4	127	4.2	2,311
Zambezi	136	4.9	372	14.6	400	17.1	118	5.3	20	0.9	1,046
<b>TOTAL</b>	<b>1,499</b>	<b>2.3</b>	<b>5,641</b>	<b>9.5</b>	<b>14,239</b>	<b>25.6</b>	<b>9,257</b>	<b>19.5</b>	<b>1,275</b>	<b>2.7</b>	<b>31,911</b>

Table 3: Numbers and percentages of **boys** enrolled in ECD by age groups in each region

Region	0-2 years		2-3 years		4-5 years		6-7 years		> 7 years		Total
	number	%	number	%	number	%	number	%	number	%	
Erongo	221	5.8	612	20.8	1,133	40.6	723	28.9	65	2.7	2,754
Hardap	8	0.4	85	4.8	334	17.5	137	8.4	9	0.6	573
!Karas	75	3.9	286	18.2	745	44.7	231	16.0	15	1.1	1,352
Kavango	28	0.4	756	10.9	1,733	25.3	929	15.5	162	2.9	3,608
Khomas	417	4.8	1,047	16.0	1,639	26.6	1,473	26.9	228	4.4	4,804
Kunene	7	0.2	126	4.4	312	10.7	316	13.8	35	1.5	796
Ohangwena	42	0.5	337	4.5	1,071	14.7	1,030	16.1	103	1.6	2,583
Omaheke	6	0.3	79	3.6	404	18.3	220	13.0	87	5.2	796
Omusati	45	0.7	410	6.0	1,563	23.2	1,222	21.0	142	2.4	3,382
Oshana	81	1.8	520	12.8	1,426	36.2	738	21.7	25	0.7	2,790
Oshikoto	107	2.1	401	7.8	1,341	26.5	735	15.9	40	0.9	2,624
Otjozondjupa	47	1.1	422	10.3	1,008	25.5	684	20.4	67	2.2	2,228
Zambezi	125	4.5	359	14.4	411	17.4	96	4.3	26	1.2	1,017
<b>TOTAL</b>	<b>1,084</b>	<b>1.8</b>	<b>5,081</b>	<b>9.2</b>	<b>12,709</b>	<b>23.6</b>	<b>8,438</b>	<b>18.0</b>	<b>978</b>	<b>2.1</b>	<b>28,290</b>

Table 4: Numbers and percentages of children enrolled in ECD per constituency.

Region	Name	0-2 years		2-3 years		4-5 years		6-7 years		> 7 years	
		Number	%	Number	%	Number	%	Number	%	Number	%
Erongo	Arandis	51	11.3	75	21.1	195	57.5	85	23.5	1	0.3
	Dâures	7	1.2	39	5.4	109	16.7	2	0.4	0	0.0
	Karibib	39	5.2	133	19.6	279	44.9	116	23.7	24	4.5
	Omaruru	20	4.5	65	16.1	112	29.5	52	15.3	3	0.9
	Swakopmund	264	12.6	589	37.5	886	56.8	450	32.9	53	3.9
	Walvis Bay Rural	25	1.7	159	16.0	461	47.0	495	56.0	20	2.6
	Walvis Bay Urban	49	3.0	193	16.1	277	24.4	269	25.5	49	4.9
Hardap	Gibeon	2	0.4	24	4.1	89	13.5	40	7.2	1	0.2
	Mariental Rural	1	0.1	38	4.9	137	17.7	61	9.1	0	0.0
	Mariental Urban	6	0.7	55	8.1	145	20.0	132	21.0	0	0.0
	Rehoboth Rural	0	0.0	21	6.0	26	7.0	10	3.0	0	0.0
	Rehoboth Urban East	8	0.8	61	8.0	261	32.1	54	7.7	14	1.9
	Rehoboth Urban West	8	1.7	12	2.3	21	5.2	8	2.0	0	0.0
	Berseba	13	2.8	75	14.4	158	27.9	9	1.9	0	0.0
!Karas	Karasburg	69	8.1	78	10.5	214	30.1	64	11.3	0	0.0
	Keetmanshoop Rural	5	1.5	89	26.3	215	63.4	75	24.4	2	0.7
	Keetmanshoop Urban	14	1.4	62	7.8	294	36.7	94	13.8	0	0.0
	Lüderitz	23	3.5	164	32.4	423	75.7	174	35.4	11	2.1
	Oranjemund	37	7.4	128	34.0	248	69.3	103	37.9	22	7.5

Kavango	Kahenge	7	0.3	233	11.2	390	19.2	154	9.0	62	3.9
	Kapakoko	17	0.9	67	3.7	188	11.3	68	4.6	26	1.7
	Mashare	9	0.9	187	19.2	331	34.5	57	6.7	33	4.0
	Mpungu	0	0.0	108	8.0	198	14.4	82	6.9	13	1.2
	Mukwe	0	0.0	115	7.0	288	17.1	147	10.3	40	3.0
	Ndiyona	1	0.1	171	13.4	466	34.8	327	30.8	62	5.9
	Rundu Rural East	2	0.1	54	3.9	208	15.5	145	11.6	25	2.2
	Rundu Rural West	6	0.2	229	10.1	861	38.0	652	32.7	37	1.9
	Rundu Urban	50	3.9	243	21.8	576	56.2	398	40.9	23	2.8
Khomas	John Pandeni	21	2.9	42	7.6	77	14.4	32	6.0	0	0.0
	Katutura Central	62	5.1	145	15.0	259	26.8	199	20.0	40	3.8
	Katutura East	42	4.4	172	21.9	308	40.1	163	23.5	31	4.3
	Khomasdal North	141	6.5	270	15.9	569	34.9	579	37.7	99	6.5
	Moses Garoëb	87	2.9	263	14.3	361	21.4	409	31.4	118	9.7
	Samora Machel	182	6.1	373	19.4	490	27.2	443	26.6	100	6.4
	Tobias Hainyeko	130	4.4	327	17.3	583	30.8	548	34.0	64	4.5
	Windhoek East	139	20.6	226	35.4	264	42.4	205	38.4	97	17.0
	Windhoek Rural	2	0.2	16	1.6	183	18.8	15	1.9	1	0.1
	Windhoek West	94	4.8	304	18.9	423	28.4	450	32.6	40	2.7
Kunene	Epupa	1	0.1	49	3.1	116	7.4	44	3.5	3	0.3
	Kamanjab	1	0.2	17	3.6	86	18.7	98	30.0	27	7.7
	Khorixas	11	1.6	40	5.8	164	24.7	95	15.7	10	1.7
	Opuwo	1	0.1	51	2.8	131	7.1	141	9.5	0	0.0
	Outjo	5	0.7	63	10.0	163	27.0	145	26.7	27	5.4
	Sesfontein	2	0.4	39	7.3	92	16.2	72	16.5	1	0.2
Ohangwena	Eenhana	19	1.7	85	7.0	222	18.2	162	14.6	14	1.2
	Endola	19	1.3	77	5.2	195	13.4	185	14.9	6	0.4
	Engela	6	0.4	46	3.4	137	10.9	177	16.4	12	1.1
	Epembe	1	0.1	9	0.7	110	9.3	33	3.5	3	0.3
	Ohangwena	30	3.0	135	13.2	497	50.4	372	43.3	57	6.4
	Okongo	6	0.3	142	8.7	199	11.9	210	14.4	9	0.6
	Omulonga	6	0.3	28	1.3	122	5.9	84	4.5	3	0.2
	Omundaungilo	0	0.0	1	0.2	26	4.4	19	3.8	0	0.0
	Ondobe	8	0.5	93	6.1	288	20.2	188	14.5	22	1.6
	Ongenga	7	0.5	35	2.7	175	14.2	182	16.9	12	1.0
	Oshikango	28	1.4	125	7.8	460	28.2	477	33.5	55	3.8
Omaheke	Aminuis	0	0.0	27	3.4	47	6.3	18	2.9	0	0.0
	Epukiro	0	0.0	9	2.0	26	5.9	24	7.8	2	0.7
	Gobabis	0	0.0	52	5.5	461	44.4	324	35.4	140	15.5
	Kalahari	0	0.0	3	0.6	21	4.5	23	6.3	11	2.9
	Otjinene	4	0.8	23	4.1	58	10.6	38	10.5	16	4.8
	Otjombinde	3	0.7	14	2.9	13	2.5	18	5.1	1	0.3
	Steinhausen	3	0.6	35	6.0	92	15.6	19	4.5	12	2.6

Omusati	Anamulenge	1	0.1	43	5.9	180	23.2	246	35.2	11	1.7
	Elim	0	0.0	23	4.1	175	29.8	145	31.3	2	0.4
	Etayi	8	0.4	104	5.1	437	22.7	308	17.5	40	2.2
	Ogongo	18	1.7	59	5.4	174	16.3	156	16.9	51	5.3
	Okahao	4	0.4	80	9.9	310	33.3	222	27.9	35	4.3
	Okalongo	8	0.5	51	2.8	336	19.6	208	13.1	39	2.2
	Onesi	1	0.1	39	4.9	167	21.4	205	30.6	5	0.7
	Oshikuku	19	3.9	46	10.1	228	51.7	218	56.8	1	0.3
	Otamanzi	4	0.6	60	7.6	179	22.8	149	21.8	2	0.3
	Outapi	28	1.3	112	5.3	528	24.5	289	16.3	14	0.7
	Ruacana	5	0.6	97	10.3	273	32.0	260	35.5	61	8.3
	Tsandi	16	1.1	82	5.2	317	20.1	279	21.5	21	1.6
Oshana	Okaku	7	0.7	38	3.3	154	14.3	212	22.4	15	1.6
	Okatana	7	1.0	51	7.0	218	29.0	70	11.0	6	1.0
	Okatyali	5	2.6	16	8.4	32	16.5	14	9.3	1	0.6
	Ompundja	0	0.0	30	11.8	80	34.5	59	26.6	1	0.5
	Ondangwa	56	3.1	227	13.7	697	45.6	368	27.2	27	2.0
	Ongwediva	53	3.0	324	20.9	642	42.8	289	21.6	9	0.7
	Oshakati East	14	1.0	142	12.8	503	46.1	230	23.6	14	1.5
	Oshakati West	52	4.6	159	19.1	372	45.1	192	28.3	24	3.4
	Uukwiyu	1	0.1	55	8.1	155	22.5	73	12.2	1	0.2
	Uuvudhiya	1	0.5	13	6.0	88	47.3	43	22.1	2	1.1
Oshikoto	Eengodi	7	0.5	30	2.0	106	7.2	42	3.3	4	0.3
	Guinas	51	8.4	93	15.4	75	12.8	29	6.1	4	1.0
	Okankolo	14	1.2	52	4.6	212	18.4	102	10.4	9	1.0
	Olukonda	16	3.6	60	13.5	229	49.4	80	20.7	3	0.7
	Omuntele	18	1.9	59	6.0	269	27.3	224	25.9	11	1.2
	Omuthiyagwiipundi	77	5.1	182	11.6	572	37.2	379	28.6	55	4.0
	Onayena	0	0.0	45	5.9	258	33.4	73	8.8	2	0.3
	Oniipa	10	0.8	108	9.2	448	37.7	150	13.7	5	0.5
	Onyaanya	1	0.1	39	3.3	255	22.3	126	12.2	1	0.1
	Tsumeb	40	3.8	148	16.6	391	46.9	283	32.7	9	1.2
Otjozondjupa	Grootfontein	3	0.2	76	5.6	240	18.7	194	18.8	61	6.0
	Okahandja	67	5.1	247	20.2	610	51.3	378	36.5	85	9.3
	Okakarara	3	0.2	84	5.3	162	10.7	87	7.6	27	2.6
	Omatako	6	0.7	162	16.0	315	30.1	114	12.9	11	1.4
	Otavi	0	0.0	32	5.0	100	14.7	100	18.4	9	1.9
	Otjiwarongo	31	1.8	250	16.3	449	29.3	421	30.3	1	0.1
	Tsumkwe	1	0.1	29	4.2	138	22.2	46	8.5	0	0.0
Zambezi	Kabbe	6	0.7	19	2.1	39	4.5	6	0.7	0	0.0
	Katima Mulilo Rural	11	1.0	71	7.1	97	10.4	21	2.5	0	0.0
	Katima Mulilo Urban	148	8.2	333	23.3	350	26.4	138	10.8	19	1.7
	Kongola	11	4.2	46	14.6	52	16.7	15	5.2	24	8.5
	Linyanti	33	3.8	144	18.2	98	12.9	0	0.0	0	0.0
	Sibinda	52	9.0	118	20.1	175	33.8	34	6.6	3	0.6



Table 5: Numbers and percentages of **orphans** aged less than 10 attending ECD centres.

	Girls		Boys	
	Number	%	Number	%
Erongo	37	5.5	32	4.4
Hardap	33	5.8	27	4.7
!Karas	33	6.5	34	7.0
Kavango	358	12.2	333	11.3
Khomas	96	4.7	93	4.7
Kunene	41	5.2	46	5.5
Ohangwena	212	5.8	199	5.5
Omaheke	35	5.6	29	4.9
Omusati	182	5.3	149	4.4
Oshana	114	5.6	91	4.8
Oshikoto	109	4.9	115	5.1
Otjozondjupa	77	7.5	68	6.5
Zambezi	54	5.3	73	7.0
<b>NAMIBIA</b>	<b>1,381</b>	<b>6.4</b>	<b>1,289</b>	<b>6.0</b>

Table 6: Numbers and percentages of **disabled children** aged less than 10 attending ECD centres.

	Girls		Boys	
	Number	%	Number	%
Erongo	33	20.0	60	35.7
Hardap	10	7.2	13	8.7
!Karas	41	30.6	46	33.8
Kavango	248	30.7	213	22.5
Khomas	50	9.1	52	9.0
Kunene	44	20.0	36	12.4
Ohangwena	111	14	134	16.1
Omaheke	21	14.3	36	20.8
Omusati	231	26.8	252	26.1
Oshana	89	17	95	17.1
Oshikoto	57	6.2	79	8.2
Otjozondjupa	42	8.3	42	7.8
Zambezi	34	15	55	21.5
<b>NAMIBIA</b>	<b>1,011</b>	<b>16.9</b>	<b>1,113</b>	<b>17.0</b>

Table 7: Numbers of children with different kinds of disabilities attending ECD centres in each region.

	Hearing	Learning	Physical	Visual	Total
Erongo	3	61	16	13	93
Hardap	1	16	1	5	23
!Karas	5	63	7	12	87
Kavango	169	222	50	20	461
Khomas	10	61	13	18	102
Kunene	5	68	4	3	80
Ohangwena	45	152	34	14	245
Omaheke	4	34	12	7	57
Omusati	34	341	67	41	483
Oshana	21	133	24	6	184
Oshikoto	8	99	22	7	136
Otjozondjupa	12	56	12	4	84
Zambezi	7	62	9	11	89
<b>NAMIBIA</b>	<b>324</b>	<b>1,368</b>	<b>271</b>	<b>161</b>	<b>2,124</b>

Table 8: Numbers and percentages judged to have adequate toilet provision as a result of counts of toilets and children.

	Less than 25 children/ toilet	More than 25 children/ toilet	% adequate
Erongo	81	52	61.0
Hardap	36	9	80.0
!Karas	51	32	61.0
Kavango	28	151	16.0
Khomas	110	94	54.0
Kunene	35	24	59.0
Ohangwena	15	219	6.0
Omaheke	19	23	45.0
Omusati	61	316	16.0
Oshana	77	167	32.0
Oshikoto	102	150	40.0
Otjozondjupa	70	60	54.0
Zambezi	16	46	26.0
<b>Namibia</b>	<b>701</b>	<b>1,343</b>	<b>34.3</b>

Table 9: Numbers and percentages of ECD centres having clean water per region.

	Total ECD centres	Total Yes	% clean
Erongo	133	131	98.5
Hardap	45	43	95.6
!Karas	83	76	91.6
Kavango	179	128	71.5
Khomas	204	202	99.0
Kunene	59	54	91.5
Ohangwena	234	92	39.3
Omaheke	42	38	90.5
Omusati	377	129	34.2
Oshana	244	131	53.7
Oshikoto	252	148	58.7
Otjozondjupa	130	128	98.5
Zambezi	62	46	74.2
<b>NAMIBIA</b>	<b>2,044</b>	<b>1,346</b>	<b>65.9</b>

Table 10: Numbers and percentages of ECD centres reported as having adequate space or not.

	Yes	No	No answer	Not applicable	Total	% YES
Erongo	105	17	9	3	134	78.4
!Karas	65	8	5	5	83	78.3
Kavango	98	28	24	32	182	53.8
Khomas	105	27	76	3	211	49.8
Kunene	43	8	4	4	59	72.9
Ohangwena	114	36	81	4	235	48.5
Omaheke	25	6	10	1	42	59.5
Omusati	196	132	25	29	382	51.3
Oshana	192	32	12	9	245	78.4
Oshikoto	187	18	40	7	252	74.2
Otjozondjupa	90	23	7	11	131	68.7
Zambezi	28	17	7	10	62	45.2
<b>NAMIBIA</b>	<b>1,248</b>	<b>352</b>	<b>300</b>	<b>118</b>	<b>2,018</b>	<b>61.8</b>

Table 11: Numbers of ECD owned by different organisations per region.

	Community	Private	Faith-based organization	NGO	Government	No answer	TOTAL
Erongo	29	87	17	1			134
Hardap	18	16	10	1	1		46
!Karas	33	32	15	2	1		83
Kavango	141	22	16	2		1	182
Khomas	74	116	13	3	2	8	216
Kunene	37	5	17				59
Ohangwena	220	9	1			5	235
Omaheke	27	3	12				42
Omusati	360	20	3				383
Oshana	192	45	8			1	246
Oshikoto	234	10	6	1		1	252
Otjozondjupa	66	45	13	1		6	131
Zambezi	50	6	3	3			62
<b>NAMIBIA</b>	<b>no.</b>	<b>416</b>	<b>134</b>	<b>14</b>	<b>4</b>	<b>22</b>	<b>2,071</b>
	<b>%</b>	<b>71.5%</b>	<b>6.5%</b>	<b>0.7%</b>	<b>0.2%</b>	<b>1.1%</b>	<b>100%</b>

Table 12: Numbers and percentages of ECD centres where none of the caregivers were trained.

	No Training	Total ECD centres	%
Erongo	37	133	27.8
Hardap	17	45	37.8
!Karas	39	83	47.0
Kavango	75	179	41.9
Khomas	43	204	21.1
Kunene	32	59	54.2
Ohangwena	99	234	42.3
Omaheke	15	42	35.7
Omusati	108	377	28.6
Oshana	86	244	35.2
Oshikoto	102	252	40.5
Otjozondjupa	43	130	33.1
Zambezi	30	62	48.4
<b>NAMIBIA</b>	<b>726</b>	<b>2,044</b>	<b>35.5</b>

Table 13: Numbers of caregivers who were eligible to enrol at NAMCOL.\*

	Eligible	Not eligible	Total	% eligible
Erongo	107	37	144	74.3
Hardap	32	14	46	69.6
!Karas	54	27	81	66.7
Kavango	126	67	193	65.3
Khomas	178	38	216	82.4
Kunene	40	16	56	71.4
Ohangwena	159	73	232	68.5
Omaheke	30	11	41	73.2
Omusati	298	85	383	77.8
Oshana	164	80	244	67.2
Oshikoto	174	84	258	67.4
Otjozondjupa	84	46	130	64.6
Zambezi	47	12	59	79.7
<b>NAMIBIA</b>	<b>1,493</b>	<b>590</b>	<b>2,083</b>	<b>71.7</b>

\* To be eligible for NAMCOL a caregiver had to have completed Grade 12 or a higher qualification, or have completed the 3 month MGECW course?

Table 14: Numbers and percentages of ECD centres in each region that were rated as having the quality of their overall learning environment in the poorest third, middle or good third or the highest very good third of all ECD centres in the country.

	Poor		Good		Very good		Total
	Number	%	Number	%	Number	%	
Erongo	25	18.8	36	27.1	72	54.1	133
Hardap	5	10.9	9	19.6	32	69.6	46
!Karas	12	14.6	24	29.3	46	56.1	82
Kavango	59	32.4	86	47.3	37	20.3	182
Khomas	47	22.5	62	29.7	100	47.8	209
Kunene	12	20.3	17	28.8	30	50.8	59
Ohangwena	58	31.5	76	41.3	50	27.2	184
Omaheke	6	14.3	8	19.0	28	66.7	42
Omusati	192	50.8	113	29.9	73	19.3	378
Oshana	63	25.8	104	42.6	77	31.6	244
Oshikoto	120	48.6	58	23.5	69	27.9	247
Otjozondjupa	35	26.9	55	42.3	40	30.8	130
Zambezi	32	51.6	18	29.0	12	19.4	62
<b>NAMIBIA</b>	<b>666</b>	<b>33.3</b>	<b>666</b>	<b>33.3</b>	<b>666</b>	<b>33.3</b>	<b>1,998</b>

Table 15: Numbers and percentages of ECDs which had their learning environment scored in the low, middle or high tercile groups compared to whether the ECD had a management board, was registered with the MGECW, its ownership, or whether it had some trained caregivers or not.

Does the ECD have a Board?	Low		Average		Highest		Total
	Number	%	Number	%	Number	%	
No	588	36%	565	35%	484	30%	1,637
Yes	52	18%	82	28%	163	55%	297
<b>Is the ECD registered with MGECW?</b>							
No	557	35%	543	35%	470	30%	1,570
Yes	89	24%	108	29%	171	46%	368
<b>Who owns the ECD?*</b>							
Community	539	38%	498	35%	382	27%	1,419
Faith-based Organization	29	22%	37	28%	68	51%	134
Private	94	23%	118	29%	198	48%	410
<b>Does the ECD have trained caregivers?</b>							
No	274	40%	226	33%	182	27%	682
Yes	392	30%	440	33%	484	37%	1316

\* The numbers of government and NGO-owned ECD were too small to be included in these comparisons

Table 16: Numbers and percentages of ECD centres in each region that were rated as having the quality of their overall learning environment in the poorest third, middle or good third or the highest very good third of all ECD centres in the country.

	Poor		Good		Very good		Total
	Number	%	Number	%	Number	%	
Erongo	11	8.3	51	38.3	71	53.4	133
Hardap	7	15.2	13	28.3	26	56.5	46
!Karas	15	18.1	23	27.7	45	54.2	83
Kavango	85	46.7	66	36.3	31	17	182
Khomas	35	16.7	43	20.6	131	62.7	209
Kunene	18	30.5	15	25.4	26	44.1	59
Ohangwena	81	39.9	71	35	51	25.1	203
Omaheke	8	19	15	35.7	19	45.2	42
Omusati	228	59.7	104	27.2	50	13.1	382
Oshana	83	33.9	99	40.4	63	25.7	245
Oshikoto	44	17.6	117	46.8	89	35.6	250
Otjozondjupa	21	16	45	34.4	65	49.6	131
Zambezi	40	64.5	14	22.6	8	12.9	62
<b>NAMIBIA</b>	<b>676</b>	<b>33.3</b>	<b>676</b>	<b>33.3</b>	<b>675</b>	<b>33.3</b>	<b>2,027</b>

Table 17: Numbers and percentages of ECDs which had their physical facilities scored in the low, middle or high tercile groups compared to whether the ECD had a management board, was registered with the MGECW, its ownership, or whether it had some trained caregivers or not.

<b>Does the ECD have a Board?</b>	Low		Average		Highest		Total
	Number	%	Number	%	Number	%	
No	620	37%	584	35%	458	28%	1662
Yes	37	12%	65	22%	195	66%	297
<b>Is the ECD registered with MGECW?</b>							
No	598	38%	553	35%	442	28%	1,593
Yes	61	16%	106	28%	206	55%	373
<b>Who owns the ECD?*</b>							
Community	604	42%	530	37%	312	22%	1,446
Faith-based Organization	14	10%	34	25%	86	64%	134
Private	53	13%	105	26%	252	61%	410
<b>Does the ECD have trained caregivers?</b>							
No	231	33%	252	36%	210	30%	693
Yes	445	33%	424	32%	465	35%	1,334

\* The numbers of government and NGO-owned ECD were too small to be included in these comparisons

## Appendix B. Survey instrument used during the 2012 survey of ECD Centres



Ministry of Gender Equality and Child Welfare



### Namibian ECD Centre Baseline Survey 2012

#### 1. Details About The Survey

I am an official of the Ministry of Gender Equality and Child Welfare. I am visiting you today to collect information regarding the services you provide to young children. These details will be used to construct the first ECD database for the MGECW in Namibia. This information will be used for planning and record keeping purposes. All information will be treated with confidentiality. Please feel free to answer all questions as honestly as possible and ask me if there are questions you do not understand. Your time and cooperation are highly valued.  
**Thank you.**

1.1	Date Of The Baseline Survey Visit	Day	Month	Year
-----	-----------------------------------	-----	-------	------

#### 2. Details About The Centre/Facility

2.1	Centre/Facility Name			
2.2	Date First Opened Under Current Management	Day	Month	Year
2.3	Region (Tick Only One)	<input type="checkbox"/> Caprivi <input type="checkbox"/> Erongo <input type="checkbox"/> Hardap <input type="checkbox"/> Karas <input type="checkbox"/> Kavango	<input type="checkbox"/> Khomas <input type="checkbox"/> Kunene <input type="checkbox"/> Oshana <input type="checkbox"/> Oshikoto <input type="checkbox"/> Otjozondjupa	<input type="checkbox"/> Oshana <input type="checkbox"/> Oshikoto <input type="checkbox"/> Otjozondjupa
2.4	Constituency			
2.5	City/Town/Village/Farm			
2.6	Phone Number(s)			
2.7	Fax Number			
2.8	Email Address			
2.9	Physical Address			
2.10	Postal Address			
2.11	Ownership Of The Centre/Facility (Tick Only One)	<input type="checkbox"/> Community <input type="checkbox"/> Private <input type="checkbox"/> NGO	<input type="checkbox"/> Faith Based Organization <input type="checkbox"/> Other _____	
2.12	Type Of Structure (Tick All That Apply)	<input type="checkbox"/> Model IECD Centre <input type="checkbox"/> Traditional <input type="checkbox"/> Corrugated Iron <input type="checkbox"/> Church Building <input type="checkbox"/> School Building <input type="checkbox"/> Brick	<input type="checkbox"/> Shed Without Walls <input type="checkbox"/> Pre-Fabricated <input type="checkbox"/> Home-Based <input type="checkbox"/> Under Tree <input type="checkbox"/> Other _____	
2.13	Days Of Operation (Tick All That Apply)	<input type="checkbox"/> Monday <input type="checkbox"/> Tuesday <input type="checkbox"/> Wednesday <input type="checkbox"/> Thursday	<input type="checkbox"/> Friday <input type="checkbox"/> Saturday <input type="checkbox"/> Sunday	
2.14	Centre/Facility Opening Time			
2.15	Centre/Facility Closing Time			
2.16	Approximate Longest Distance Children Travel From Home To The Centre/Facility			
2.17	Are There Any Government Pre-Primary Centres In Your Vicinity	<input type="checkbox"/> Yes	<input type="checkbox"/> No	



	If Yes, Please Specify	
2.18	Is Your Centre/Facility Registered With The MGECW  If Yes, MGECW Registration Number	<input type="checkbox"/> Yes <input type="checkbox"/> No
2.19	Is Your Centre/Facility Registered With Any Other Organization  If Yes, With Whom?  If Yes, Please Provide Registration Number	<input type="checkbox"/> Yes <input type="checkbox"/> No
2.20	Does The Centre/Facility Have A Parent Committee  If Yes, Number Of Female Members If Yes, Number Of Male Members	<input type="checkbox"/> Yes <input type="checkbox"/> No
2.21	Does the Centre/Facility have a Board?	<input type="checkbox"/> Yes <input type="checkbox"/> No

3. Details About Support		
3.1	Monthly Expected/Required Parent Fees Per Child	N\$
3.2	Total Fees Received Last Month	N\$
3.3	Donations Received Last Year (Tick All That Apply)	<input type="checkbox"/> Not Applicable <input type="checkbox"/> Food <input type="checkbox"/> Land <input type="checkbox"/> Equipment <input type="checkbox"/> Toys <input type="checkbox"/> Stationary <input type="checkbox"/> Furniture <input type="checkbox"/> Building or Building Material <input type="checkbox"/> N\$ _____ <input type="checkbox"/> Other _____
3.4	Government Support Received Last Year	<input type="checkbox"/> Not Applicable <input type="checkbox"/> Food <input type="checkbox"/> Land <input type="checkbox"/> Equipment <input type="checkbox"/> Toys <input type="checkbox"/> Stationary <input type="checkbox"/> Furniture <input type="checkbox"/> Building or Building Material <input type="checkbox"/> Other _____
3.5	Funds Received Last Year  List Sources	N\$
3.6	Does The Centre/Facility Have a Bank Account  If Yes, Specify Where Your Account Is Held  If It Is Someone Else's Account, Please List Owner	<input type="checkbox"/> Yes <input type="checkbox"/> No

4. Details About The Director/Manager/Head Of Centre/Facility	
4.1	First Name
4.2	Surname
4.3	Age
4.4	Gender <input type="checkbox"/> Female <input type="checkbox"/> Male
4.5	Is Director/Manager/Head Of Centre/Facility Also A Caregiver/Educator <input type="checkbox"/> Yes <input type="checkbox"/> No
4.6	Highest Qualification (Tick Only One) <input type="checkbox"/> Less Than Grade 10 <input type="checkbox"/> First Degree <input type="checkbox"/> Grade 10 <input type="checkbox"/> Master's Degree <input type="checkbox"/> Grade 12 <input type="checkbox"/> Other _____ <input type="checkbox"/> 2 Year Diploma
4.7	Training In ECD (Tick All That Apply) <input type="checkbox"/> None <input type="checkbox"/> 1 To 2 Years <input type="checkbox"/> Less Than 1 Month <input type="checkbox"/> More Than 2 Years <input type="checkbox"/> MGECW 12 week course <input type="checkbox"/> Currently Enrolled <input type="checkbox"/> Less Than 1 Year  If Currently Enrolled, Please Specify  If Trained In ECD, Who Provided The Training
4.8	Monthly Allowance/Salary N\$
4.9	Office Phone Number
4.10	Mobile Phone Number
4.11	Fax Number
4.12	Email Address

5. Management And Record Keeping		Yes	No	Comments
5.1	Planned Daily Programme - <b>Check It</b>	<input type="checkbox"/>	<input type="checkbox"/>	
5.2	Daily Attendance Register - <b>Check It</b>	<input type="checkbox"/>	<input type="checkbox"/>	
5.3	Register Of Enrolled Children - <b>Check It</b> File With Information And Contact Details For Each Child	<input type="checkbox"/>	<input type="checkbox"/>	

6. Details About Staff		Females	Males
6.1	Number Of Caregivers/Educators		
6.2	Number Of Additional Staff (Gardeners, Cooks, Cleaners, Guards, etc.)		

7. Details About Caregiver/Educarer 1	
7.1	Age
7.2	Gender <input type="checkbox"/> Female <input type="checkbox"/> Male
7.3	Highest Qualification (Tick All That Apply)  <input type="checkbox"/> Currently Enrolled <input type="checkbox"/> Certificate <input type="checkbox"/> Less Than Grade 10 <input type="checkbox"/> Two Year Diploma <input type="checkbox"/> <input type="checkbox"/> Grade 10 <input type="checkbox"/> First Degree <input type="checkbox"/> Grade 12 <input type="checkbox"/> Master's <input type="checkbox"/> Other _____
	If Currently Enrolled, Please Specify
7.4	Training In ECD (Tick All That Apply)  <input type="checkbox"/> None <input type="checkbox"/> 1 To 2 Years <input type="checkbox"/> Less Than 1 Month <input type="checkbox"/> More Than 2 Years <input type="checkbox"/> MGECW 12 week course <input type="checkbox"/> Currently Enrolled <input type="checkbox"/> Less Than 1 Year
	If Currently Enrolled, Please Specify
	If Trained In ECD, Who Provided The Training  <input type="checkbox"/> CCN <input type="checkbox"/> Montessori <input type="checkbox"/> MGECW <input type="checkbox"/> UNAM <input type="checkbox"/> NGO-ECD Association <input type="checkbox"/> NIED - MoE <input type="checkbox"/> Namcol <input type="checkbox"/> Other _____
7.5	Responsible For Age-Groups (Tick All That Apply)  <input type="checkbox"/> 0 – 23 Months <input type="checkbox"/> 6 - 7 Years <input type="checkbox"/> 2 – 3 Years <input type="checkbox"/> Older Than 7 Years <input type="checkbox"/> 4 – 5 Years
7.6	Total Number Of Children In All Of The Caregiver's/Educarer's Groups
7.7	Monthly Allowance/Salary N\$

8. Details About Caregiver/Educarer 2	
8.1	Age
8.2	Gender <input type="checkbox"/> Female <input type="checkbox"/> Male
8.3	Highest Qualification (Tick All That Apply)  <input type="checkbox"/> Currently Enrolled <input type="checkbox"/> Certificate <input type="checkbox"/> Less Than Grade 10 <input type="checkbox"/> Two Year Diploma <input type="checkbox"/> <input type="checkbox"/> Grade 10 <input type="checkbox"/> First Degree <input type="checkbox"/> Grade 12 <input type="checkbox"/> Master's <input type="checkbox"/> Other _____
	If Currently Enrolled, Please Specify
8.4	Training In ECD (Tick All That Apply)  <input type="checkbox"/> None <input type="checkbox"/> 1 To 2 Years <input type="checkbox"/> Less Than 1 Month <input type="checkbox"/> More Than 2 Years <input type="checkbox"/> MGECW 12 week course <input type="checkbox"/> Currently Enrolled <input type="checkbox"/> Less Than 1 Year
	If Currently Enrolled, Please Specify
	If Trained In ECD, Who Provided The Training  <input type="checkbox"/> CCN <input type="checkbox"/> Montessori <input type="checkbox"/> MGECW <input type="checkbox"/> UNAM <input type="checkbox"/> NGO-ECD Association <input type="checkbox"/> NIED - MoE <input type="checkbox"/> Namcol <input type="checkbox"/> Other _____
8.5	Responsible For Age-Groups (Tick All That Apply)  <input type="checkbox"/> 0 – 23 Months <input type="checkbox"/> 6 - 7 Years <input type="checkbox"/> 2 – 3 Years <input type="checkbox"/> Older Than 7 Years <input type="checkbox"/> 4 – 5 Years
8.6	Total Number Of Children In All Of The Caregiver's/Educarer's Groups
8.7	Monthly Allowance/Salary N\$

9. Details About Caregiver/Educarer 3	
9.1 Age	
9.2 Gender	<input type="checkbox"/> Female <input type="checkbox"/> Male
9.3 Highest Qualification (Tick All That Apply)	<input type="checkbox"/> Currently Enrolled <input type="checkbox"/> Certificate <input type="checkbox"/> Less Than Grade 10 <input type="checkbox"/> Two Year Diploma <input type="checkbox"/> <input type="checkbox"/> Grade 10 <input type="checkbox"/> First Degree <input type="checkbox"/> Grade 12 <input type="checkbox"/> Master's <input type="checkbox"/> Other _____
	If Currently Enrolled, Please Specify
9.4 Training In ECD (Tick All That Apply)	<input type="checkbox"/> None <input type="checkbox"/> 1 To 2 Years <input type="checkbox"/> Less Than 1 Month <input type="checkbox"/> More Than 2 Years <input type="checkbox"/> MGECW 12 week course <input type="checkbox"/> Currently Enrolled <input type="checkbox"/> Less Than 1 Year
	If Currently Enrolled, Please Specify
	If Trained In ECD, Who Provided The Training
	<input type="checkbox"/> CCN <input type="checkbox"/> Montessori <input type="checkbox"/> MGECW <input type="checkbox"/> UNAM <input type="checkbox"/> NGO-ECD Association <input type="checkbox"/> NIED - MoE <input type="checkbox"/> Namcol <input type="checkbox"/> Other _____
9.5 Responsible For Age-Groups (Tick All That Apply)	<input type="checkbox"/> 0 – 23 Months <input type="checkbox"/> 6 - 7 Years <input type="checkbox"/> 2 – 3 Years <input type="checkbox"/> Older Than 7 Years <input type="checkbox"/> 4 – 5 Years
9.6 Total Number Of Children In All Of The Caregiver's/Educarer's Groups	
9.7 Monthly Allowance/Salary	N\$

10. Details About Caregiver/Educarer 4	
10.1 Age	
10.2 Gender	<input type="checkbox"/> Female <input type="checkbox"/> Male
10.3 Highest Qualification (Tick All That Apply)	<input type="checkbox"/> Currently Enrolled <input type="checkbox"/> Certificate <input type="checkbox"/> Less Than Grade 10 <input type="checkbox"/> Two Year Diploma <input type="checkbox"/> <input type="checkbox"/> Grade 10 <input type="checkbox"/> First Degree <input type="checkbox"/> Grade 12 <input type="checkbox"/> Master's <input type="checkbox"/> Other _____
	If Currently Enrolled, Please Specify
10.4 Training In ECD (Tick All That Apply)	<input type="checkbox"/> None <input type="checkbox"/> 1 To 2 Years <input type="checkbox"/> Less Than 1 Month <input type="checkbox"/> More Than 2 Years <input type="checkbox"/> MGECW 12 week course <input type="checkbox"/> Currently Enrolled <input type="checkbox"/> Less Than 1 Year
	If Currently Enrolled, Please Specify
	If Trained In ECD, Who Provided The Training
	<input type="checkbox"/> CCN <input type="checkbox"/> Montessori <input type="checkbox"/> MGECW <input type="checkbox"/> UNAM <input type="checkbox"/> NGO-ECD Association <input type="checkbox"/> NIED - MoE <input type="checkbox"/> Namcol <input type="checkbox"/> Other _____
10.5 Responsible For Age-Groups (Tick All That Apply)	<input type="checkbox"/> 0 – 23 Months <input type="checkbox"/> 6 - 7 Years <input type="checkbox"/> 2 – 3 Years <input type="checkbox"/> Older Than 7 Years <input type="checkbox"/> 4 – 5 Years
10.6 Total Number Of Children In All Of The Caregiver's/Educarer's Groups	
10.7 Monthly Allowance/Salary	N\$

11. Details About All Enrolled Children		Females	Males
11.1	Total Children Currently Enrolled		
11.2	Children Attending Day Of Enumeration		
11.3	Children Age 0 To 23 Months		
11.4	Children Age 2 To 3 Years		
11.5	Children Age 4 To 5 Years		
11.6	Children Age 6 To 7 Years		
11.7	Children Older Than 7 Years		
11.8	Children Who Dropped Out Last Year		
11.9	Reasons For Drop Outs (Tick All That Apply)	<input type="checkbox"/> Moved <input type="checkbox"/> Unknown <input type="checkbox"/> Could Not Pay Fees <input type="checkbox"/> Other _____ <input type="checkbox"/> Distance	

12. Children With Impairments		Females	Males
12.1	Children With A Chronic Illnesses		
12.2	Children With A Learning Difficulty/Impairment		
12.3	Children With A Physical Impairment		
12.4	Children With A Visual Impairment		
12.5	Children With A Hearing Impairment		
12.6	Orphaned Children (Have Lost One Or Both Parents)		

13. Nutrition			
13.1	Are Meals Provided (If No, Please Skip This Section)	<input type="checkbox"/> Yes	<input type="checkbox"/> No
13.2	Who Provides The Meals (Tick All That Apply)	<input type="checkbox"/> Parents <input type="checkbox"/> Centre/Facility <input type="checkbox"/> NGO	<input type="checkbox"/> FBO <input type="checkbox"/> Government <input type="checkbox"/> Other _____
13.3	Is There A Kitchen Area/Place For Food Preparation	<input type="checkbox"/> Yes	<input type="checkbox"/> No
13.4	Is The Place For Food Preparation Clean	<input type="checkbox"/> Yes	<input type="checkbox"/> No
13.5	Type Of Cooking Facilities (Tick All That Apply)	<input type="checkbox"/> Open Fire <input type="checkbox"/> Gas Stove	<input type="checkbox"/> Electric Stove <input type="checkbox"/> Other _____
13.6	Describe Types Of Meals Provided		
13.7	Meal On The Day Of Enumeration		
13.8	Comments		

14. Health, Safety, And Sanitation		Yes	No	Comments
14.1	Health Cards And Health Records (Immunizations Copies Are Available And Up To Date)	<input type="checkbox"/>	<input type="checkbox"/>	
14.2	First Aid Kit (Stocked And Onsite: Gloves, Disinfectant, Bandages)	<input type="checkbox"/>	<input type="checkbox"/>	
14.3	Dangerous Objects Are Out Of Reach Of Children (For Example Fluids, Medicines)	<input type="checkbox"/>	<input type="checkbox"/>	
14.4	Adequate Means To Dispose Of Refuse/Trash	<input type="checkbox"/>	<input type="checkbox"/>	

15. Drinking Water		Yes	No	Comments
15.1	Is There Drinking Water Available And Accessible To Children (If No, Please Skip This Section)	<input type="checkbox"/>	<input type="checkbox"/>	
15.2	Is The Drinking Water Clean	<input type="checkbox"/>	<input type="checkbox"/>	
15.3	Is The Water Sufficient For The Number Of Children	<input type="checkbox"/>	<input type="checkbox"/>	
15.4	What Is The Source Of The Drinking Water	<input type="checkbox"/> Tap <input type="checkbox"/> River <input type="checkbox"/> Well		<input type="checkbox"/> Borehole <input type="checkbox"/> Other _____

16. Learning Environment		Very Good	Good	Poor
16.1	Children Appear Engaged	<input type="checkbox"/>	<input type="checkbox"/>	<input type="checkbox"/>
16.2	Children Appear Active	<input type="checkbox"/>	<input type="checkbox"/>	<input type="checkbox"/>
16.3	Play Materials Are Available Children	<input type="checkbox"/>	<input type="checkbox"/>	<input type="checkbox"/>
16.4	Play Materials Are Used By The Children	<input type="checkbox"/>	<input type="checkbox"/>	<input type="checkbox"/>
16.5	Reading Materials In Mother Tongue Are Available	<input type="checkbox"/>	<input type="checkbox"/>	<input type="checkbox"/>
16.6	Reading Materials In Mother Tongue Used By Children	<input type="checkbox"/>	<input type="checkbox"/>	<input type="checkbox"/>
16.7	Caregivers/Educators Appear Warm And Responsive To The Children	<input type="checkbox"/>	<input type="checkbox"/>	<input type="checkbox"/>
16.8	Children Appear To Communicate Freely With Each Other	<input type="checkbox"/>	<input type="checkbox"/>	<input type="checkbox"/>
16.9	Children Appear To Communicate Freely With The Caregivers/ Educators	<input type="checkbox"/>	<input type="checkbox"/>	<input type="checkbox"/>
16.10	Centre Appears To Have A Calm And Ordered Atmosphere	<input type="checkbox"/>	<input type="checkbox"/>	<input type="checkbox"/>
16.11	Evidence Of Positive Discipline With No Physical Punishment	<input type="checkbox"/>	<input type="checkbox"/>	<input type="checkbox"/>
16.13	Centre/Facility Has Regular Meetings With Parents/Guardians (Once A Term At Least)	<input type="checkbox"/>	<input type="checkbox"/>	<input type="checkbox"/>
16.14	Comments			

17. Physical Facilities		Yes	No	N/A	Comments
17.1	Safety Of Outdoor Space (Free From Dangerous Objects And Unsafe Areas)	<input type="checkbox"/>	<input type="checkbox"/>	<input type="checkbox"/>	

17.2	Outdoor Area Fenced	<input type="checkbox"/>	<input type="checkbox"/>	<input type="checkbox"/>
17.3	Sufficient Shade Available Outside	<input type="checkbox"/>	<input type="checkbox"/>	<input type="checkbox"/>
17.4	Play Equipment In Good Condition (Swings, Slides, Chairs, And Tables)	<input type="checkbox"/>	<input type="checkbox"/>	<input type="checkbox"/>
17.5	Play Equipment In Safe (Swings, Slides, Chairs, And Tables)	<input type="checkbox"/>	<input type="checkbox"/>	<input type="checkbox"/>
17.6	Toilet Facilities Are Clean	<input type="checkbox"/>	<input type="checkbox"/>	<input type="checkbox"/>
17.7	Toilet Facilities Are Functioning	<input type="checkbox"/>	<input type="checkbox"/>	<input type="checkbox"/>
17.8	Hand Washing Facility With Soap	<input type="checkbox"/>	<input type="checkbox"/>	<input type="checkbox"/>
17.9	Centre/Facility Is Accessible To Persons With Disabilities	<input type="checkbox"/>	<input type="checkbox"/>	/
17.10	Sufficient Toys And Materials For The Number Of Children	<input type="checkbox"/>	<input type="checkbox"/>	/
17.11	Sufficient Toilet Facilities 1 Toilet Per 25 Children	<input type="checkbox"/>	<input type="checkbox"/>	/
	Number Of Flush Toilets _____	/	/	/
	Number Of Pit Latrines _____	/	/	/
	Number Of Open Latrines _____	/	/	/
17.12	Adequate Indoor Space (Enough Space, Well Ventilated And Sufficient Light)	<input type="checkbox"/>	<input type="checkbox"/>	<input type="checkbox"/>
	Total Number Of Rooms _____	/	/	/
	Number Of Rooms Used For Children _____	/	/	/
17.13	Is There A Separate Room For An Office For The Staff	<input type="checkbox"/>	<input type="checkbox"/>	<input type="checkbox"/>

18. Information On Other Centres/Facilities	
18.1	Are There Any Other Centres/Facilities In Your Vicinity/Area <input type="checkbox"/> Yes <input type="checkbox"/> No
18.2	If Yes, List Names And Contact Details

19. Details About The Enumerator	
19.1	First Name
19.2	Surname
19.3	Organization
19.4	Position
19.5	Phone Number
19.6	Email

20. Signatures			
20.1	Signature Of Centre/Facility Manage Or Staff		
20.2	Signature Of Enumerator		
20.3	Signature Of Quality Assurance Officer		
20.4	Signature Of Data Typist		

**END OF REPORT**